



**Figure 5**

**Gunnison Energy Corporation**

**WELLBORE DIAGRAM  
SPAULDING PEAK #1**

Location: 1765' FNL, 985' FWL (SWNW) Sec. 24, T12S, R94W, Delta Co, CO

Elevation: 8601' GL

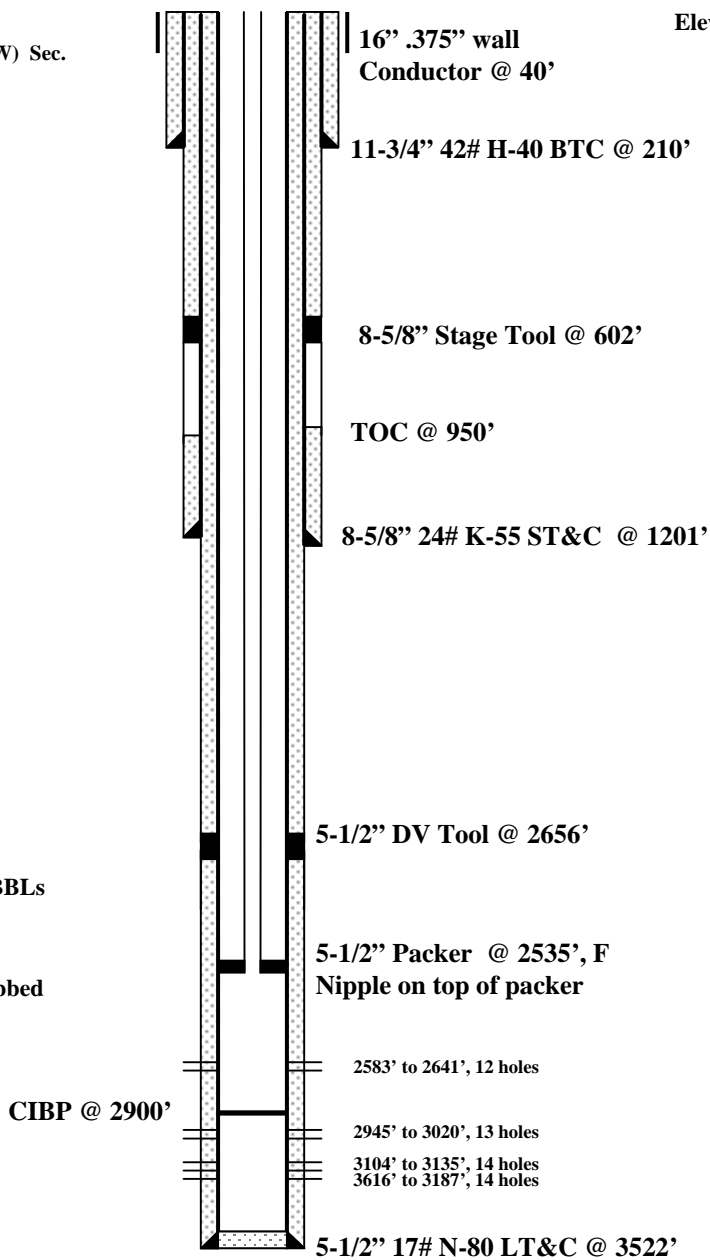
**FORMATION TOPS**

Wasatch	N/A
Ohio Creek	512'
Upper Mesa Verde	1480'
Cameo Coals	2944'
"D" Seam	2944'
"C" Seam	3011'
"B" Seam	3102'
"A" Seam	3162'
Rollins	3204'
Cozzette	Not Penetrated
Corcoran	Not Penetrated
Mancos	3372'
TD	3522'

**STIMULATION:**

3104' to 3187' Stimulated well with 1,587 BBLs of fluid and 20/40 sand as a propping agent. Recovered 89% of Load Water

2583' to 2641' Perforated 12 holes and swabbed well in.



**CIBP @ 2900'**

**PBTD @ 3473'**

**Driller's TD @ 3525'**

CASING	HOLE SIZE	CMT. CU.FT.	CMT. BBLs	CMT. SACKS	TOP OF CMT.
SURFACE	14-3/4"	443	79	310	SURFACE
INTERMEDIATE STG.1	10-5/8"	317	57	175	950' (CBL)
INTERMEDIATE STG.2	10-5/8"	437	78	150	SURFACE
PRODUCTION STG. 1	7-7/8"	320	57	170	SURFACE
PRODUCTION STG. 2	7-7/8"	948	169	330	SURFACE