

WWE WRIGHT WATER ENGINEERS, INC. 2490 W. 26TH AVE., SUITE 100A DENVER, CO 80211 (303)480-1700 FAX(303)480-1020

GRAPHIC SCALE
 2000 1000 0 SCALE IN FEET

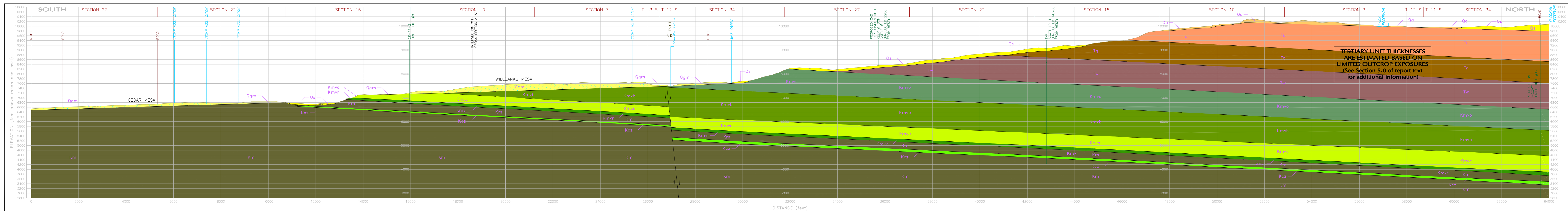
GEOLOGIC KEY

| | | | | | | | | | | | | | | | | | | | | | | | | | | | | | | | | | | | | | | | |
|-----|----|------|------|-------|-------|-------|-------|-------|-------|-------|-------|-------|-------|--------|--------|--------|--------|--------|--------|--------|--------|--------|--------|--------|--------|--------|--------|--------|--------|--------|--------|--------|--------|--------|--------|--------|--------|--------|--------|
| Qgm | Qm | Qmva | Qmvs | Qmvsb | Qmvsd | Qmvsf | Qmvsj | Qmvsq | Qmvsr | Qmvsu | Qmvsx | Qmvsy | Qmvsz | Qmvsaa | Qmvsab | Qmvsac | Qmvsad | Qmvsae | Qmvsaf | Qmvsag | Qmvsah | Qmvsai | Qmvsaj | Qmvsak | Qmvsal | Qmvsam | Qmvsan | Qmvsao | Qmvsap | Qmvsaq | Qmvsar | Qmvsas | Qmvsat | Qmvsau | Qmvsav | Qmvsaw | Qmvsax | Qmvsay | Qmvsaz |
| Quw | Qm | Qmva | Qmvs | Qmvsb | Qmvsd | Qmvsf | Qmvsj | Qmvsq | Qmvsr | Qmvsu | Qmvsx | Qmvsy | Qmvsz | Qmvsaa | Qmvsab | Qmvsac | Qmvsad | Qmvsae | Qmvsaf | Qmvsag | Qmvsah | Qmvsai | Qmvsaj | Qmvsak | Qmvsal | Qmvsam | Qmvsan | Qmvsao | Qmvsap | Qmvsaq | Qmvsar | Qmvsas | Qmvsat | Qmvsau | Qmvsav | Qmvsaw | Qmvsax | Qmvsay | Qmvsaz |

GEOLOGIC INFORMATION COMPILED BY C. RICHARD DUNFORD USING USGS MAP C-1116 (DUNFORD 1989), COAL RESOURCE DRILL HOLE DATA AND PERSONAL KNOWLEDGE.

GEOLOGIC CROSS SECTION A-A'
 WEST TO EAST SECTION NEAR CEDAREDDGE

EXHIBIT 5



WWE WRIGHT WATER ENGINEERS, INC. 2490 W. 26TH AVE., SUITE 100A DENVER, CO 80211 (303)480-1700 FAX(303)480-1020

GRAPHIC SCALE
 2000 1000 0 SCALE IN FEET

GEOLOGIC KEY

| | | | | | | | | | | | | | | | | | | | | | | | | | | | | | | | | | | | | | | | |
|-----|----|------|------|-------|-------|-------|-------|-------|-------|-------|-------|-------|-------|--------|--------|--------|--------|--------|--------|--------|--------|--------|--------|--------|--------|--------|--------|--------|--------|--------|--------|--------|--------|--------|--------|--------|--------|--------|--------|
| Qgm | Qm | Qmva | Qmvs | Qmvsb | Qmvsd | Qmvsf | Qmvsj | Qmvsq | Qmvsr | Qmvsu | Qmvsx | Qmvsy | Qmvsz | Qmvsaa | Qmvsab | Qmvsac | Qmvsad | Qmvsae | Qmvsaf | Qmvsag | Qmvsah | Qmvsai | Qmvsaj | Qmvsak | Qmvsal | Qmvsam | Qmvsan | Qmvsao | Qmvsap | Qmvsaq | Qmvsar | Qmvsas | Qmvsat | Qmvsau | Qmvsav | Qmvsaw | Qmvsax | Qmvsay | Qmvsaz |
| Quw | Qm | Qmva | Qmvs | Qmvsb | Qmvsd | Qmvsf | Qmvsj | Qmvsq | Qmvsr | Qmvsu | Qmvsx | Qmvsy | Qmvsz | Qmvsaa | Qmvsab | Qmvsac | Qmvsad | Qmvsae | Qmvsaf | Qmvsag | Qmvsah | Qmvsai | Qmvsaj | Qmvsak | Qmvsal | Qmvsam | Qmvsan | Qmvsao | Qmvsap | Qmvsaq | Qmvsar | Qmvsas | Qmvsat | Qmvsau | Qmvsav | Qmvsaw | Qmvsax | Qmvsay | Qmvsaz |

GEOLOGIC INFORMATION COMPILED BY C. RICHARD DUNFORD USING USGS MAP C-1116 (DUNFORD 1989), COAL RESOURCE DRILL HOLE DATA AND PERSONAL KNOWLEDGE.

GEOLOGIC CROSS SECTION B-B'
 SOUTH TO NORTH SECTION NEAR CEDAREDDGE

EXHIBIT 6

TERTIARY UNIT THICKNESSES ARE ESTIMATED BASED ON LIMITED OUTCROP EXPOSURES (See Section 5.0 of report text for additional information)